

FARM-BASED EDUCATION NETWORK

YEAR IN REVIEW 2022



A YEAR IN REVIEW

Every year we listen to our members, and 2022 was no exception. We heard from one that FBEN “is my go-to place,” and from another that our workshop, “didn't ever feel rushed, I never felt obligated, I felt accepted where I was.” The feedback we receive about our workshops means more than the numbers of people who visited the website or downloaded resources. FBEN celebrated its 16th year in 2022 and as the Coordinator, I feel motivated and excited to continue offering workshops that honor the important work of farm-based education, nourish farm-based educators, and inspire new ideas and approaches.

In September and October, we convened in person for the first time since October 2019! At the ABCs of Farm-Based Education workshop, we opened with a campfire in the center of our circle, which warmed us inside and out while we introduced ourselves, our programs and farms, and our hopes for the time together.

Because it was a year of listening, we have interspersed our members' words throughout this year-in-review so you, too, can gain insight into the impact of our programs. We are endlessly grateful for the opportunity to support farm-based educators, and appreciate the people near and far who support this network through their participation, financial contributions, administrative and facilitative work.

Here's to a successful year, and many more ahead!

Sincerely,



Vera Simon-Nobes, Coordinator



FBEN TODAY

Established in 2006, the Farm-Based Education Network is a free member network created to strengthen and support the work of farmers, educators, and community leaders who provide access and experiences of all kinds on working farms. Our mission is to inspire, nurture, and promote farm-based education. The FBEN is a project coordinated by Shelburne Farms and supported by members, advisers, and founding partners. In 2022, we saw:

807

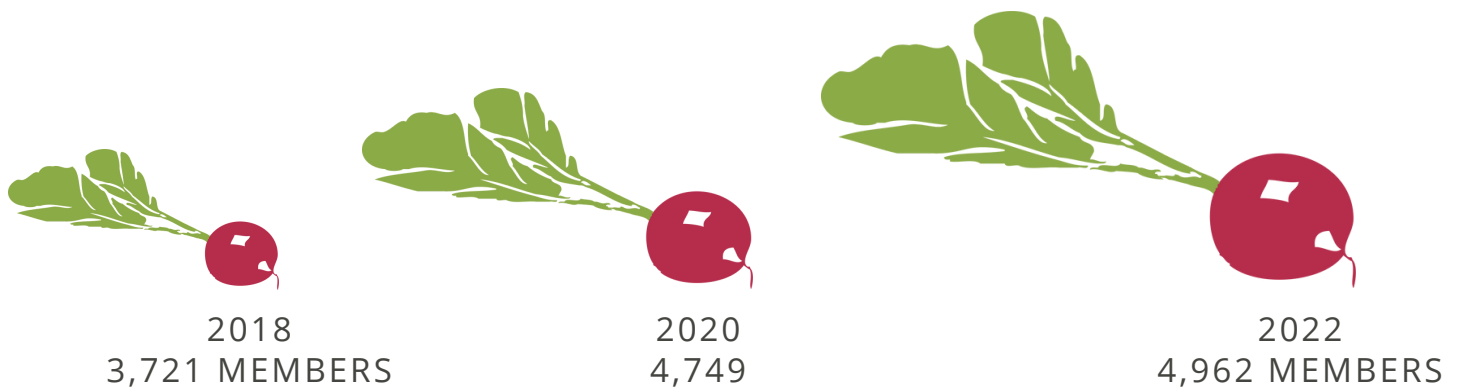
workshop participants

38

guest presenters

COMMUNICATIONS WITH IMPACT

In 2022, our newsletter open rate was 39%.



Members came from 39 states: Alabama, Alaska, Arizona, California, Connecticut, Washington, D.C., Delaware, Florida, Georgia, Hawaii, Idaho, Illinois, Iowa, Kansas, Massachusetts, Maine, Maryland, Michigan, Minnesota, North Carolina, Nevada, New Hampshire, New Jersey, New Mexico, New York, North Carolina, Ohio, Oklahoma, Oregon, Pennsylvania, South Carolina, South Dakota, Tennessee, Texas, Utah, Virginia, Vermont, Washington, Wisconsin, and West Virginia. They came from 10 countries outside of the United States: United Kingdom, Taiwan, France, Brazil, Canada, Philippines, Brazil, Vietnam, Israel, and Mauritius.

2022 WORKSHOPS



We made the most of a virtual environment until September, when we joyfully reconvened in person!

FBEN Community Check-In with Jamie Lombardo, Smokey House, Danby, VT
January 10

A Conversation on Covid Safe Maple Events
January 12

FBEN Summer Camp Virtual Learning Community
January 20 - April 28

Healing the Roots of Racism in Ourselves: for white folks
February 2 - July 6

Healing the Roots of Racism in Ourselves: for BIPOC
February 3 - July 7

Rooting Out Racism Alumni Gatherings
February 11, May 20, September 9, November 17

Land Acknowledgement for Farm-Based Educators with Judy Dow, Gedakina, and Aimee Arandia Østensen and Courtney Mulcahy, Shelburne Farms
March 1 - March 29

“ We appreciate the enthusiasm and passion for what they do that they shared with us. It’s contagious and motivating.

- ABCs participant

2022 WORKSHOPS (CONTINUED)



Planning Sugarhouse Events with Vermont Maple Sugarmakers March 3

FBEN Community Check-In with Jen Rothman, Yellow Farmhouse Education Center, Stonington, CT March 7

Farm-Based Ed. for Food System Transformation: A Master's Thesis Dialogue with Shelby Geitner May 25,

FBEN Community Check-In with Lauren Newman, Willa Pohlman and Rafael Woldeab, City Blossoms, Washington, D.C. June 16

International Workshop on Agritourism August 29

Navigating Avian Influenza: Prevention to Recovery Webinar with USDA APHIS & Pineland Farms, New Gloucester, ME September 22

Learning Journey to the Berkshire Region (In Person!) September 30

ABCs of Farm-Based Education at Shelburne Farms (In Person!) October 23 - 25

“An openness to all the different perspectives and comments, really powerful/helpful questions, a groundedness and deep intention energy that was communicated even via zoom (awesome!)

- Healing the Roots
of Racism
Participant

MEET SOME PRESENTERS

When collaborating with presenters, we look for people who are passionate about farm-based education, bring innovative approaches to their work, and are skilled at holding space for participants' growth. Our team of 2022 presenters did just that. Whether in person or virtual, presenters welcomed groups with warmth, humility and enthusiasm. Thank you!

“At the last dinner, it was wonderful to hear what each person was thankful for in relation to this workshop. It helped to highlight what each person was focused on and emphasized the different perspectives which we were each bringing to the table.

- ABCs participant



Cathryn Anderson,
Pineland Farms, New
Gloucester, ME



Charna Chaney,
Bold Yoga LLC,
Washington, D.C.



Judy Dow, Gedakina,
Essex, VT



Richael Faithful
Richael Faithful
Consulting
Washington, D.C.



Julie Gauthier, DVM,
Poultry Health, USDA
APHIS



Shelby Geitner,
Norwegian University
of Life Sciences in
Norway and ISARA-
Lyon, France



Jamie Lombardo
Smokey House
Center, Danby, VT



Julia Metzger-Traber
Potomac Vegetable
Farms, Purcellville,
VA



Rebecca Mintz
Service to Justice,
Washington, D.C.



Lauren Newman,
Willa Pohlman, and
Rafael Woldeab, City
Blossoms,
Washington, D.C.



Courtney Santseros
and Brett Kane, High
Spirit Community
Farm, Great
Barrington, MA



Cat Parrish
Shelburne Farms,
Shelburne, VT



Jennifer Rothman
Yellow Farmhouse Education
Center, Stonington, CT

THE PULSE OF THE NETWORK

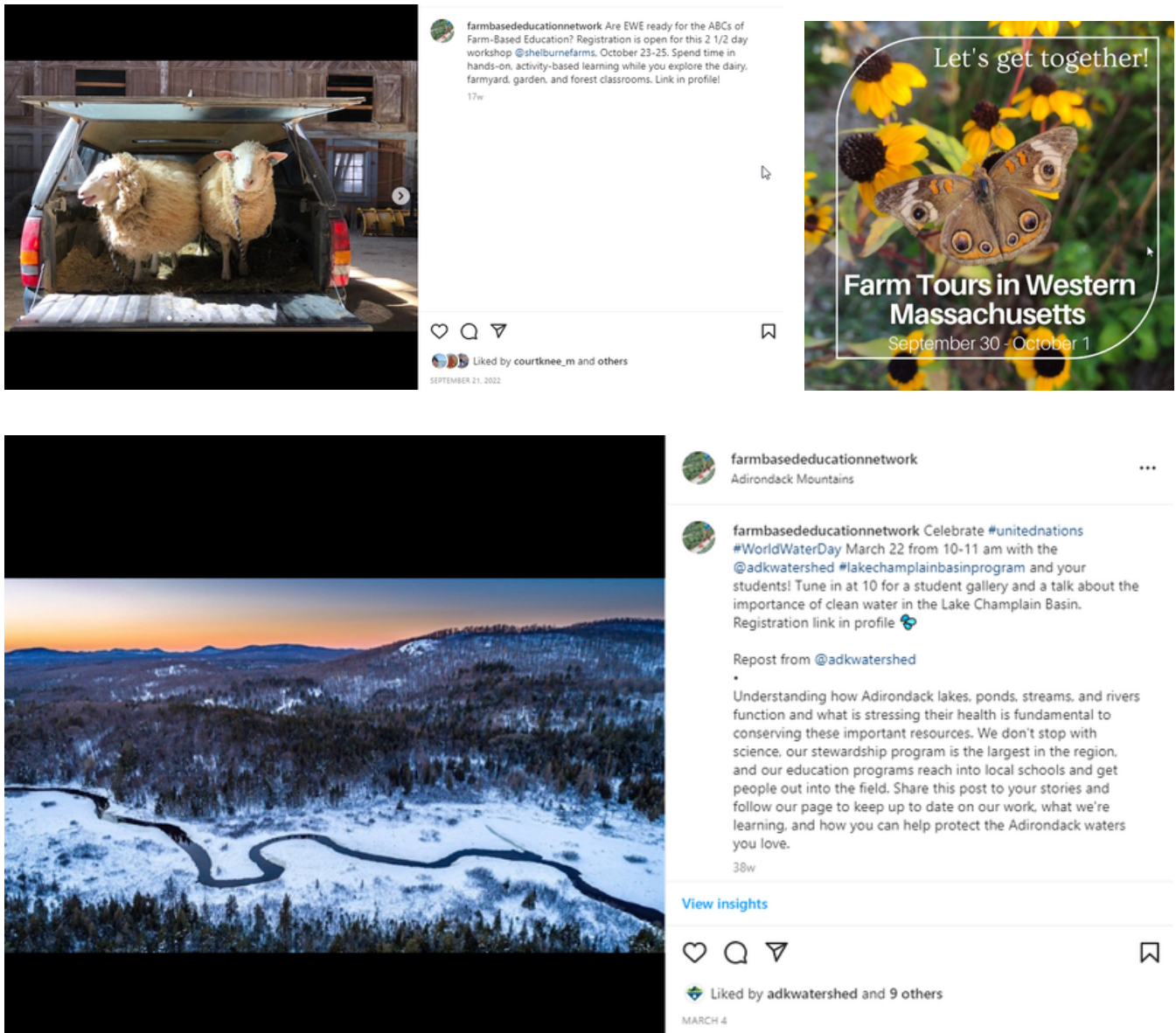
Taking the pulse of the network is an opportunity that we approach with sincerity. In 2022, we listened to members at workshops, through the peer matchmaking form, during virtual meetings, and by email and phone. The trends are exciting and the questions people are asking are profound: farm-based programming is in very high demand, some farm-based educators are approaching burnout, and many members are asking what their role is in the movement to build a more socially just world.

Here are a few questions we encountered this year:

- How can I better integrate learning especially about justice when having long physical tasks lists to accomplish? How can I facilitate conversations in the garden working with interns, volunteers and staff?
- How are others growing their programs to meet demand?
- How do we learn how to craft a "good" education team?
- What's your favorite recipe for goat treats?
- I'd like a bird's eye view of running a farm-based education program; what am I not thinking of?
- Do other farms usually offer lunches as part of their summer camps?
- How can I bring others from my organization into conversations around White Supremacy Culture and what we can do to practice the antidotes? It would be nice to have these conversations more naturally flow into the workplace rather than me sharing out on my experience and being a sole representative of someone who attended the series.
- What are best practices for hiring and retaining employees for farm-based organizations? Where are you finding candidates for summer camp?
- When I live onsite and love my job as much as I do, how do I set boundaries that my coworkers will respect so I can have time with my family?

SOCIAL MEDIA AND NETWORKING

Social media allows us to amplify the work of network members. We're researching an investment in a new platform for social networking, and had the support of consultant, Mieko Ozeki of Radiance Studios to help us explore this question this year.



WHAT'S ON FOR 2023?

- Matchmaking between mentors and mentees
- Four Community Check-Ins with programs around the United States
- Continuation of racial justice affinity spaces for farm-based educators
- Assembling Your Education Team: Panel Discussion with FBEN Members
- Building a Youth Entrepreneurship Program: A Workshop Series City Blossoms
- Summer Camp Learning Community
- Creating Physical, Emotional, Cultural Safety for Farm Employees
- Two ABCs of Farm-Based Education Workshops (in person!)
- Learning Journeys (in person!)
- Soil Microbes and Climate Change Workshop for Farm-Based Educators



YOUR SUPPORT

As many staff on farms continue to adapt their program offerings to meet a rapidly changing world, our network was a bridge between them. We exchanged information, leaned on each other to gather inspiration, and discovered new questions, so all could be stronger farm-based educators at their respective organizations. On behalf of farm-based educators and everyone impacted by the work of the FBEN, we are deeply grateful to our incredible supporters.

Anonymous
Cooper Meadow Fund
Samuel M. Feldman



Photo: Andy Duback

“ Just gratefulness! I have been sharing stories from the farm with friends, family, and students nonstop since returning from the workshop! Love all of the new perspectives, friends and memories I have gained.

- ABCs participant

FBEN'S SUPPORTING ORGANIZATION

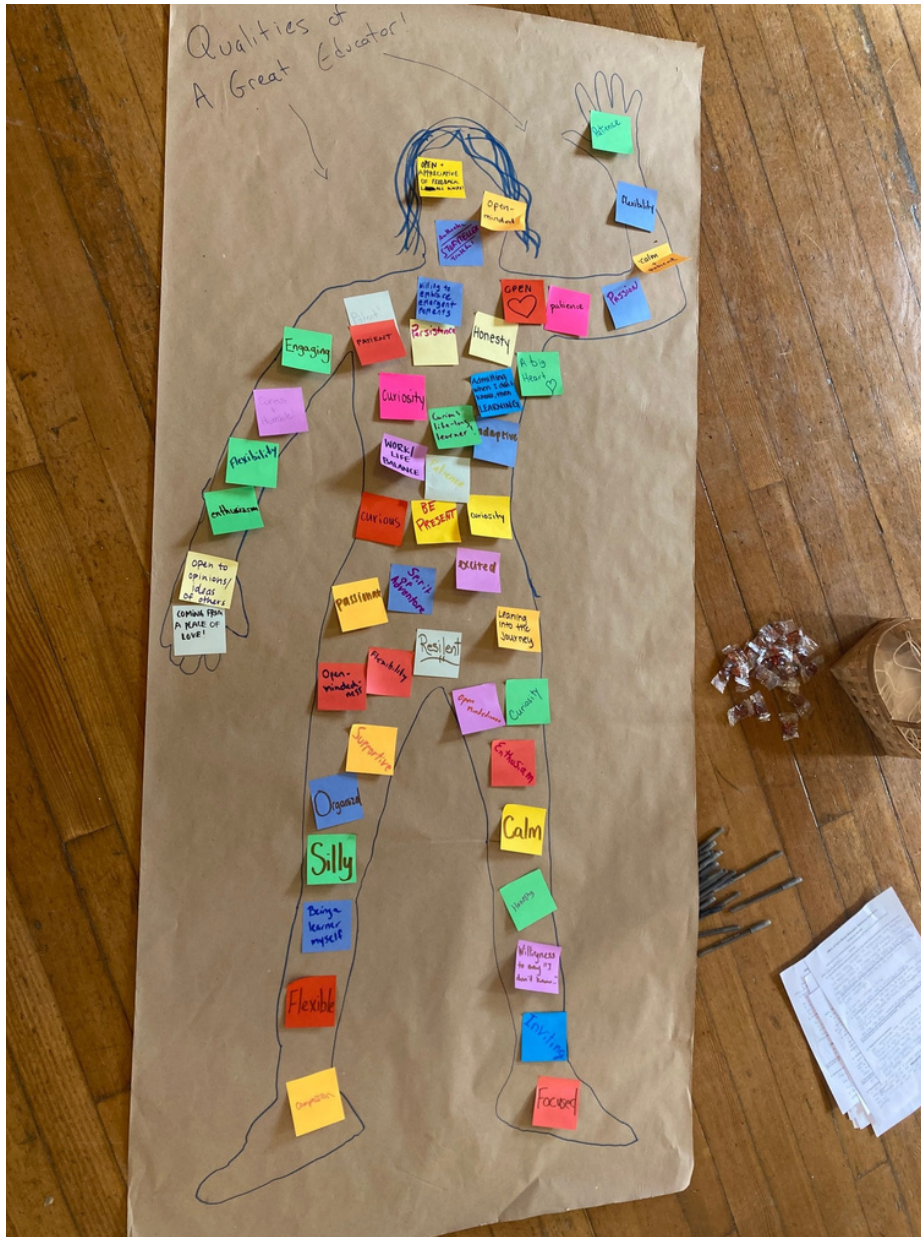


Shelburne Farms is an education nonprofit on a mission to inspire and cultivate learning for a sustainable future. Our home campus is located on the unceded, traditional, and contemporary homelands of the Winooskik band of the Abenaki. We believe that transformative learning experiences sow the seeds for a thriving and more just world. Our work seeks to create the space, spark the conversations, and share the stories to inspire educators, students, and learners of all ages to build a better future for everyone. Collaboration, sharing, and network building are at the heart of Shelburne Farms' work, and are among the reasons why Shelburne Farms is the coordinating organization for FBEN. The following Shelburne Farms staff – among others – contribute to the FBEN's vitality.

Megan Camp oversees budget, human resources, program, guidance & accountability
Sue Dixon, Anna Dundas, & Heidi Webb manage development, record keeping, & major gifts
Brooke Redmond is a special gifts officer, & FBEN's founding Executive Director
Holly Brough, Andrea Estey, Robin Turnau & Sarah Webb are the Communications Team
Vera Simon-Nobes leads the FBEN and coordinates network activities



THANK YOU FOR A GREAT YEAR, FARM-BASED EDUCATORS!



“ I am in love with this landscape. I feel motivated to encourage and foster the relationship between the people and the land through our shared connections around food, fiber and environment. This is the birthright of future generations.

- ABCs participant